

Quick Facts

- Knovel Library contains over 700 books and databases. Approximately 10-20 new titles are added each month.
- Content is embedded with Productivity Tools to help you use the content more productively.

Home Page

Knovel's Home Page features important information about Knovel and our products including:

- Overviews of Knovel products including detailed information about our content and technology solutions.
- Product Demos and access to the Knovel sample Book.
- A Help Center offering a comprehensive Help guide as well as FAQ's and other information to help you make best use of your Knovel subscription.
- Complete information on how to contact Knovel.



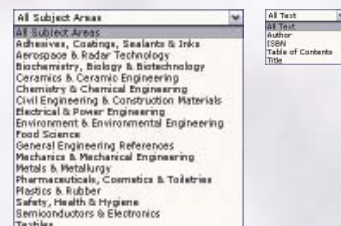
Common Access Problem Messages

- **“Number of Concurrent Users Exceeded”**
You have permission to access this book, but the number of users exceeds the licensed number of users for your account. Wait a few minutes and try again. If you continue to have problems accessing Knovel titles, contact your in-house account representative to increase the number of concurrent users for your account.
- **“Book is Not Active”**
This title is not part of your subscription, or your subscription has expired. Click on the My Subscription tab to see which titles are included in your subscription, or request access to this title from your in-house account representative.



Search Features — Keyword Search

- You can generate results by typing any keyword into the search box. For more accurate results try the following:
- Type in any two or more keywords **WITHOUT** quotation marks to match keywords in NEAR proximity (within approximately 5 to 10 words in any order) NEAR proximity works well for random keywords and for Keyword Phrases.
- Type in two or more keywords **IN** quotation marks (“keyword keyword”) to match keywords NEXT to each other in the specified order. Avoid using it for random keywords.
- Linking Keywords with Booleans: Use **AND** to link keywords and Keyword Phrases where you want to find **BOTH** anywhere on the same page of text or in the same row of an interactive table. Linking keywords with **AND** will normally produce more hits than using **NEXT** or **NEAR** Proximity.
Use **OR** to link keywords and Keyword Phrases where you want to find **EITHER** word on any page of text or in any row of an interactive table. **OR** is useful to link interchangeable or similar keywords to get more hits. Linking keywords with **OR** will normally produce more hits than using **AND**.
- Use of Wildcards: Use an asterisk (*) wildcard exclusively for right-side truncation of keywords (the **END** of words). Do not use wildcards in keywords enclosed in quotation marks (NEXT proximity).
- *Other tips:* To find a title or a chapter in a title quickly, select Title, ISBN, Author or Table of Contents from the “Search In:” dropdown and search in these fields using keywords and all other features of Knovel search.
- *More tips:* You can also search for chemical names by formula (h2so4), Hill Order (h2o4s), or Chemical Abstracts Number (78-93-3). Other numbers recognized



include alphanumeric designations for materials (SA-515 steel, etc.). Try using several methods for complete search results.

- For more information, a comprehensive Help Guide is available on the Help Center area of the site.

Search Features — Advanced Search

- Advanced Search allows you to specify the scope of a search. For example; all alcohols that melt between 50 and 100°C and boil between 200 and 300°C or alloys that contain 3-5% aluminum content. Advanced searching allows you to combine keyword and numeric searches, while limiting your search to specific subject areas, properties, and numeric ranges.
- For more information, a comprehensive Help Guide is available on the Help Center area of the site.

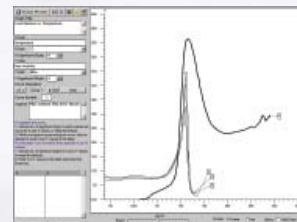
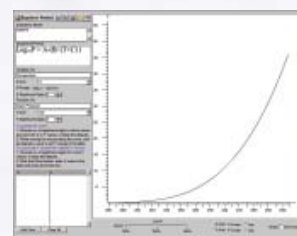
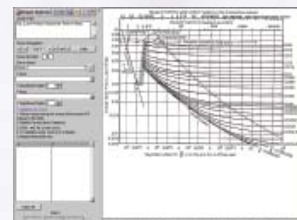


Navigating Results

- Search results are displayed in 2 steps:
 1. The results pages initially display the retrieved titles, sorted by relevancy, with up to 50 titles per page. To view information about the titles displayed click on the book icon next to the title.
 2. Click on the hot-linked title to open the TOC for that title and view the sections that have results.
- Click on any of the Data (Records) or Text (Pages) hotlinks on the right side of the page to view the results.
- Retrieved titles can be viewed sorted by subject area by clicking on the Subject radio button; click the Title Name radio button to display the retrieved titles alphabetically.

Productivity Tools

- Interactive Tables: Books with interactive tables are identified by the productivity tool icons (table icon). These tools allow you to customize tabular data as you would do when using spreadsheet applications; features include selecting rows, finding data, sorting, showing and hiding columns, changing column order, and filtering data. You can also print or save this information
- Interactive Graphs and Equations: Certain titles feature Productivity Tools such as interactive Graph Digitizers (graph icon), Equation Plotters (equation icon), and Graph Plotters (plot icon). These tools allow you to input data, make calculations, plot points on a graph, save (in different file formats) and print the information that you have collected.
- Productivity Tools are available in both Flash and Java applet formats. Click on the icons next to the titles and hits for a description of the tool. Consult the Help Guide for complete software requirements for the Productivity Tools.



More Information

Go to <http://www.knovel.com/knovel2/library/Support.jsp> and access our Help Guide for detailed instructions on how to use Knovel's search and interactive features.

Contact Knovel

Technical Support

Telephone:

1-866-303-3336 toll-free (USA)

1-203-748-6066

E-mail:

Sales: sales@knovel.com

Technical Support: support@knovel.com

